

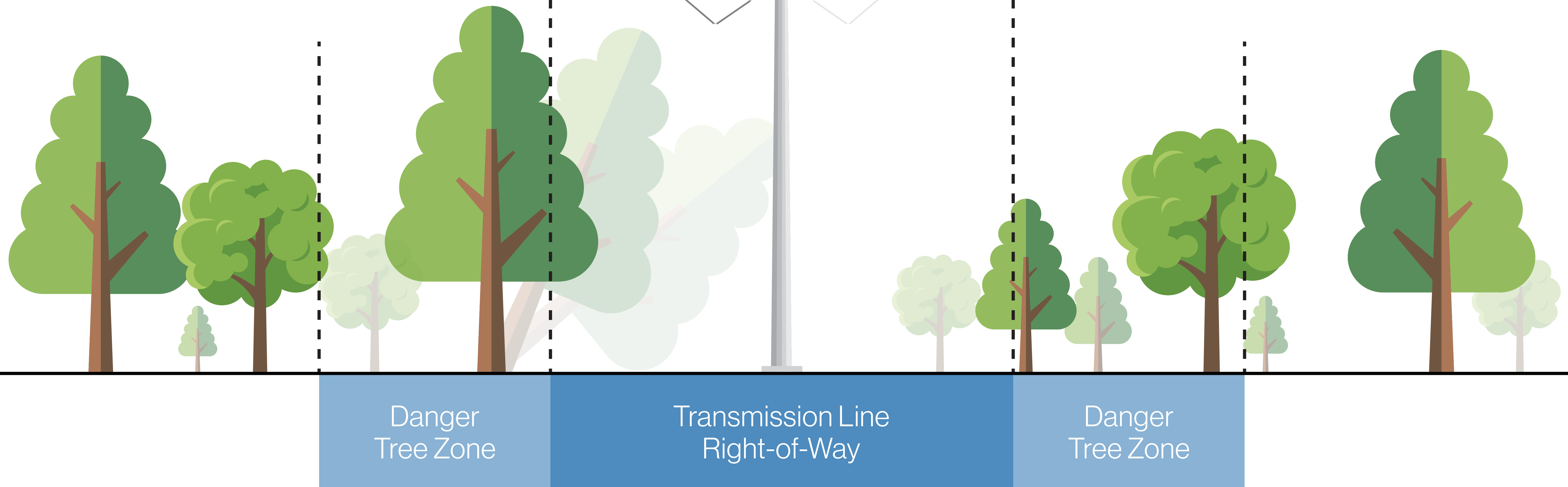
Vegetation Management

AES Ohio's Role

- Maintain service. Proper vegetation management prevents trees and limbs from falling on overhead utility lines during storms, which is among the most common causes of power outages.
- Take preventative measures. Each year AES Ohio trims trees along 2,100 miles of overhead power lines to reduce outages for customers and to protect our infrastructure from damage.
- Respond during an outage. Emergency trimming occurs any time that AES Ohio must perform unplanned work to clear trees or vegetation in order to make repairs to equipment or restore power to customers.

OPGW/Static Wire

Transmission Wire



Customer's Role

- Find the right tree. Trees come in all shapes and sizes and often change dramatically over their lifetimes. Before selecting your tree, make sure you know how tall, wide and deep its roots will reach at maturity.
- Choose the right spot. Be sure to plant the tree so it will continue to be a safe distance from existing utility lines as it grows to maturity. This can prevent avoidable power disturbances for years to come.
- Avoid utility right of way. Customers should avoid planting trees on utility rights-of-way so AES Ohio can safely access power lines and our equipment for maintenance.

Visit the National Arbor Day Foundation for information to help you choose the right tree for you property. www.arborday.org