

## ∞ Energizing community together

Community is more than where we deliver power. It is where we show up, lend a hand, and **invest in what matters most**.

In 2025, AES Ohio and the AES Ohio Foundation made 108 community investments totaling \$2 million to support community resilience, economic development, and conservation across West Central Ohio. Along the way, we helped customers through programs like Gift of Power, reached thousands with Safety 101 education, and volunteered more than 1,470 hours alongside local partners. It is work grounded in listening, partnership, and a shared belief that strong communities make a stronger region.

The 2025 Community Impact Report brings these efforts to life, highlighting the people, partnerships, and moments behind the numbers.



### 108 Investments totaling \$2 million

Supporting community resilience, economic development & conservation



**\$48 million awarded**  
in AES Ohio Foundation grants since 1985



**1,470 hours**  
of volunteer engagement by AES Ohio People



**8,350 customers**  
reached through Safety 101 educational demonstrations



**5,000+ customers**  
received emergency assistance through Gift of Power



**508 hours contributed**  
to community engagement and outreach by the Community Connector Program



Take a closer look by scanning the QR code or visiting [aes-ohio.com/community](https://aes-ohio.com/community).

AES Ohio does not pass on the cost of its community investments or advertising to customers.

# Spring planting tips that help keep the power on

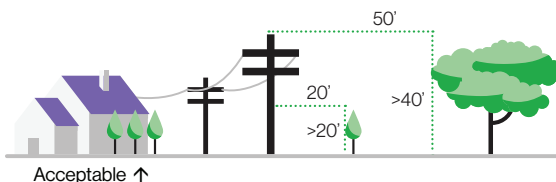
Planting this spring? **Where** and **what** you plant matters.

Spring is a great time to add new trees and landscaping to your yard. With a little planning, these choices can benefit your home and **help prevent power outages**.

Trees continue to grow long after planting day. Choosing the right tree and placing it in the right spot helps keep branches safely away from overhead power lines as they mature. Utility friendly trees and proper spacing reduce the need for future trimming and help **protect service for your entire neighborhood**.

Before you dig, take a moment to think long-term. Follow these three easy tips to prevent tree growth in overhead power lines.

1. Find the **right tree**
2. Choose the **right spot**
3. Put **safety first** call before you dig



Explore AES Ohio's Right Tree, Right Place and find utility-friendly tree and shrub options at [aes-ohio.com/utility-friendly-trees](http://aes-ohio.com/utility-friendly-trees).

Call 8-1-1 Before You Dig. **Every project. Every time.**

Spring projects are officially back! Whether you are planting a tree, installing a fence, or tackling a larger home improvement project, there is one step that should always come first. Call 8-1-1.



## Why it matters

- Underground utility lines can be shallow and hard to spot
- Digging without markings can cause injuries, outages, and costly repairs
- Calling 8-1-1 is free and required before you dig



Call 8-1-1 or submit a request online at least **48 hours** before starting



If your project runs long, **request a re-mark**

Plan ahead and contact OHIO811 at least 48 hours before you dig. Once utilities are marked, you can move forward with confidence knowing what is below the surface.



Make 8-1-1 part of your project checklist. Learn more at [aes-ohio.com/call-you-dig](http://aes-ohio.com/call-you-dig)

[www.aes-ohio.com](http://www.aes-ohio.com)

AES Ohio  
PO Box 1247  
Dayton, OH 45401-1247

Residential 800-433-8500  
Business 800-253-5801  
Report an outage 24/7 877-468-8243



**aes** Ohio